



DECOWOOD STARLINE

DECOTREND STARLINE

Bactericidal joint



▶ ALUMINIUM HANDRAILS WITH WOOD OR TREND EFFECT BAND

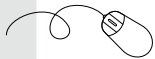
Applications

The Decowood or Decotrend Starline provide both a good grip and a stylish decorative touch with their wood or trend effect band. They are ideally suited for straight and curved corridor areas with light traffic of trolleys in public buildings: hospitals, clinics, retirement homes, hotels, offices. Starline can be bent for curved sections. A removeable system is available to provide continuation of the handrail in front of service ducts. They are fitted with bactericidal joints.

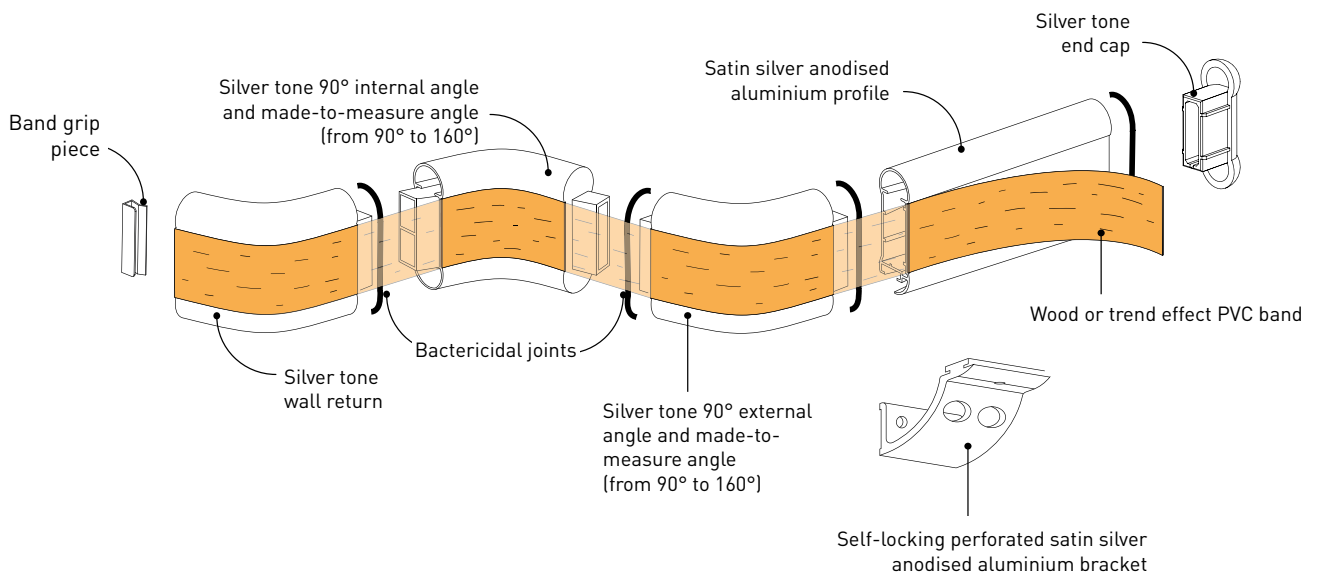
Specification

- Description: Anodised aluminium handrail with a wood or trend effect band (Decowood or Decotrend Starline as manufactured by Gerflor). The profile is satin silver anodised aluminium with a groove into which the 40 mm high satin silver anodised aluminium curved brackets slide and lock. Accessories (wall returns, 90° internal and external angle pieces or made-to-measure from 90° to 160°) made of antibacterial smooth silver tone PVC are fitted into the profile. A self-adhesive wood or trend effect PVC band is bonded to the rail assembly. The depth of the handrail is 90 mm, it has an overall projection of 80 mm and a thickness of 30 mm. Bactericidal joints are provided for the junctions between profile sections and accessories. The profile can be curved.

- Environment: No heavy metals and no substance potentially subjected to any REACH restriction are used in its manufacture, nor PBT/PBA. The calcium-zinc thermal stabilisation process is used. The emission level of volatile substance in inside air has been tested according to ISO 16000-6 and is very low (A+) according to the french regulation (23 march 2011 nr 2011-321 Decree and 19 April 2011 Order). 100% of the product are recyclable.
- Colour: Selected by architects from manufacturer's standard range.
- Installation sequence: Upper edge of section 0.90 m max. above floor level. Fixes to self-locking 2-point perforated brackets screwed to the wall at 1.20 m centres (0.80 m centres in heavy traffic corridors and on light partitions like plasterboard). Wall returns fixing with pop rivets.



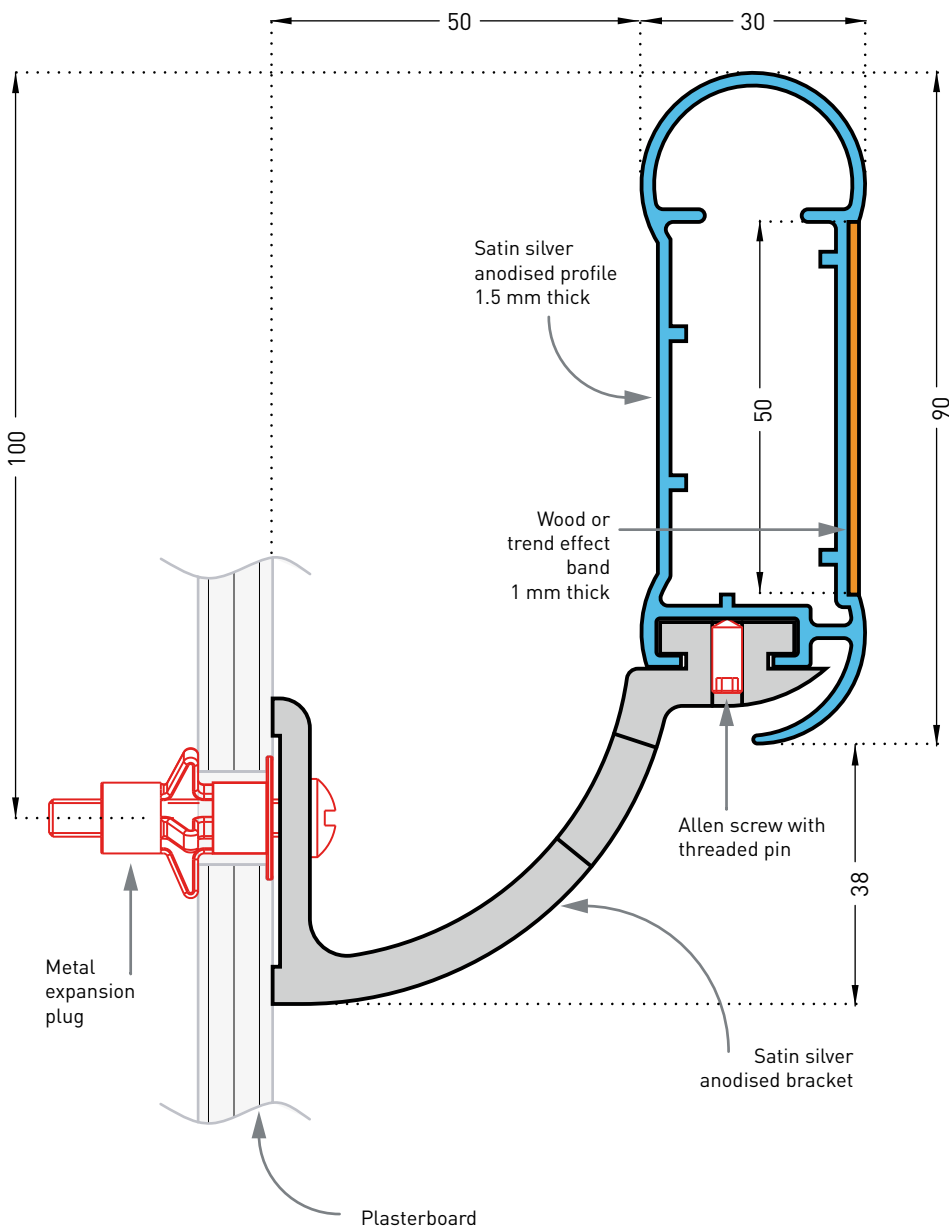
Specification and technical drawings can be downloaded from our website www.gerflor.com



Decowood Starline band
7 wood effect decors



Decotrend Starline band
4 trend effect decors



Description

- Model: Starline Decowood or Decotrend anodised aluminium handrail with wood or trend effect PVC band
- Section depth: 90 mm
- Length: 4 m
- Thickness: 30 mm
- Overall projection: 80 mm
- Stand-off from wall: 50 mm
- Material: Satin silver anodised aluminium profile with wood or trend effect PVC band achieving Bs2d0 fire rating and bactericidal joints
- Fixing components: 2-point self-locking perforated satin silver anodised aluminium brackets, screwed to wall at 1.20 m centres (0.80 m centres in heavy traffic corridors and on light partitions like plasterboard)
- Colours: 7 wood effect and 4 trend effect for the band